

Important Notice !!

This software supplied as is, with no expressed or implied guarantee of usefulness, operation or correctness. I released this software because I found it useful in running an RCPRO Pylon Race.

Most of the user interface of this program uses standard Window controls. There may be a few features and operational techniques you may not be familiar with. It is highly recommended that you read the Introduction before trying to use this software. It is not long and has lots of pictures.

The fact that you are reading this means you have the package installed. There are additional steps to take depending on how you want to use this software. It is covered in the section '**Additional Install Steps**'. If you want to remove this software, read section '**Removal**'.

Also make sure you read the section '**Requirements**'. Your computer may not be able to use this software.

NOTE ! This is release 1.0.4 of this software. It has been tested but it supports a wide variety of race options and situations you will encounter running a race. Make sure you have backup plans in case this software malfunctions. Make backup copies of the race and pilot file regularly so you can revert back in case of serious file damage.

Requirements

This software has been tested on Windows 98 and Windows 2000 Pro. It should run on Windows 95 but has not been tested. This program outputs HTML files. This makes it easy to post results on the Internet and print them during the race. In order to do any HTML file generation, you must have Windows Internet Explorer 5.0 or higher. It was tested on IE 5.5 but Microsoft claims it will run on 5.0. It is recommended that you install Internet Explorer 6 with Service Pack 1 or higher.

A pointing device (mouse) is required. You can do almost everything without a mouse but it is much easier to use this program with a mouse. A screen resolution of 800 X 600 is minimum. Larger is recommended.

A color inkjet printer is recommended. All testing was done on an Epson Stylus Color 440, a low cost inkjet printer. You can use a black only printer but you will not take advantage of the color highlights provided for printouts. For example, if you are using Wing Flags for lane identification, the heat sheet will show the colored wing flags required above the lanes.

You must have basic knowledge of the Windows Operating System and how to deal with programs and files. This program will try to warn you when you are doing something questionable but will usually let you do it if you insist.

Pilot Information Cards and Heat Cards are best printed on card stock.

And don't forget to have additional ink cartridges for your printer before the race starts !!

Introduction

RCPRO Race is a program to help run a RCPRO pylon racing event. It can help manage the entire event from pilot registration to award determination. A variety of information displays and printouts are available in multiple formats. Printouts are generated in HTML file format so you can also post the printouts on the Internet. So let's take a look. The screen shots in this document were taken using sample race file DemoRace.rwr. If you want to start up the program and follow along, you should see the same things displayed in this document.

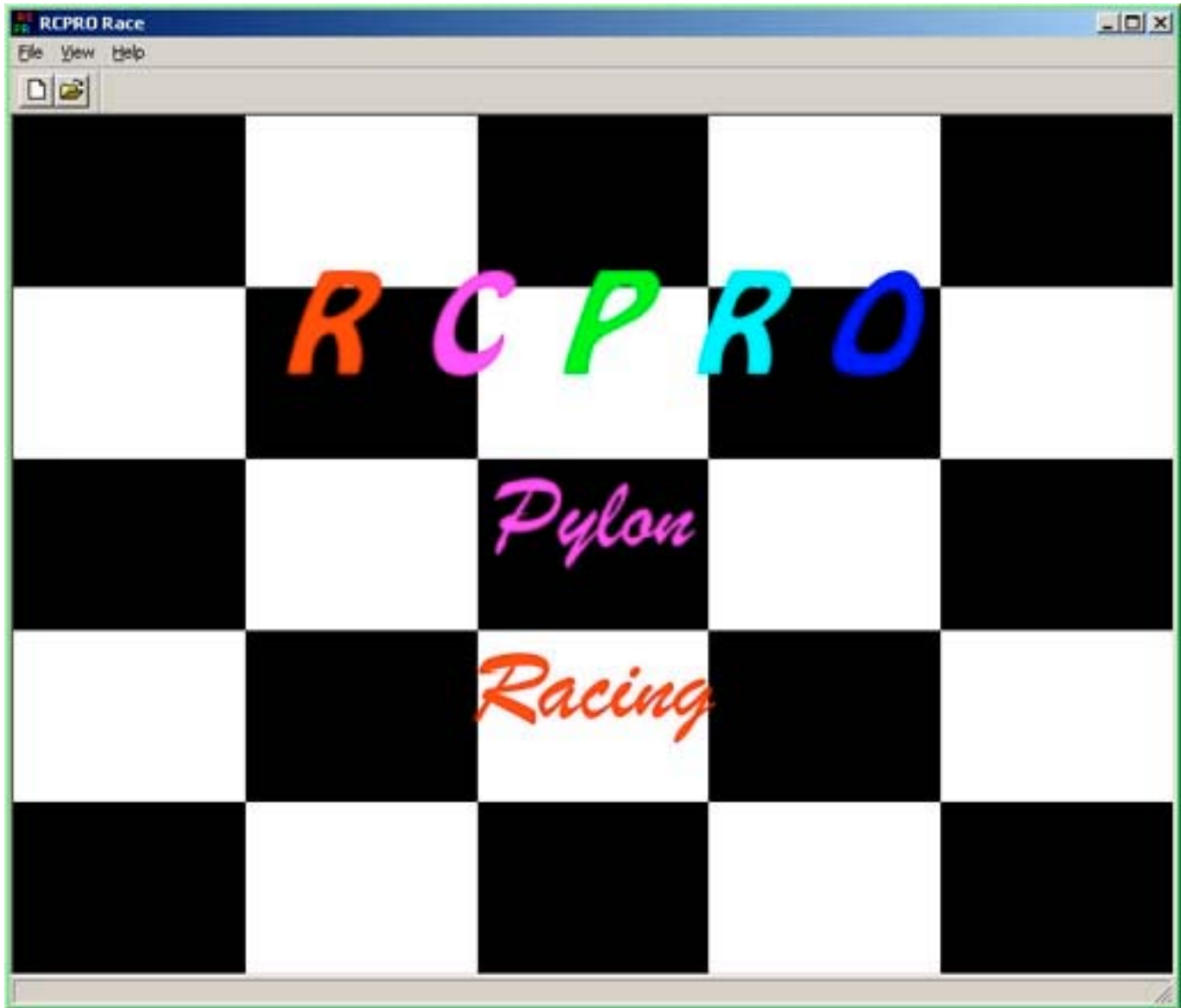
NOTE: A few of the displays will not show minor changes from the original version of this program.

Two files are used when running a race:

- Race File – A new file for every race. File name = YourRaceName.RWR
- Pilot File – A single file which accumulates pilot information for re-use with the next race. File name = RCPRO_Pilots.NMP

Main Screen

When you open the program (double click on the program file), You will see the main screen.

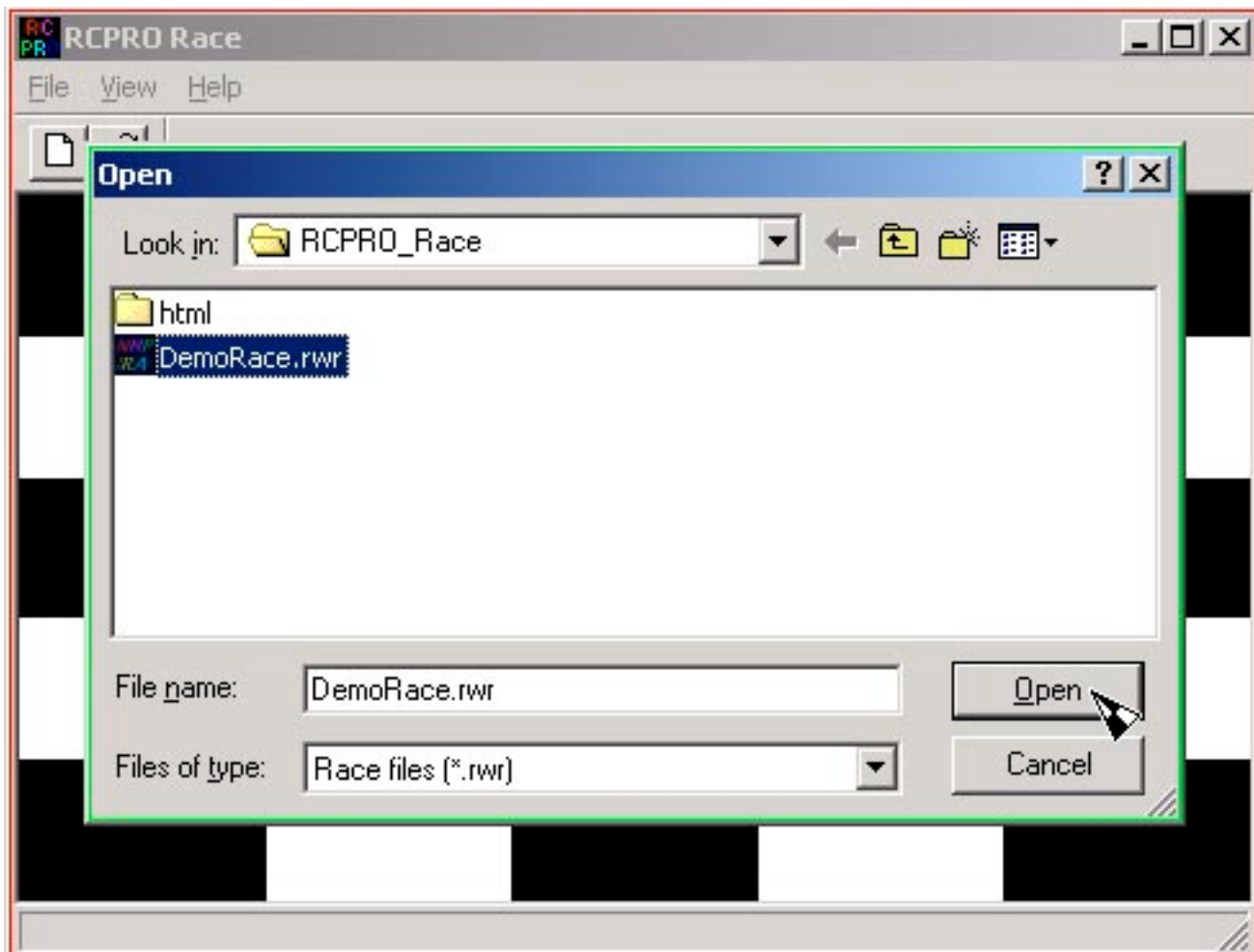


NOTE: If 'RCPRD' and/or 'Pylon Racing' look differently on your computer, you do not have the fonts installed used by this program. All the fonts used by this program are supplied in the install package and may be installed using the Windows Control Panel.

You may use the toolbar button to create a new file or the standard file open down menu. Lets open up the file DemoRace.

Open Race File

There are several ways to open a race file. For this demo, we will open one from the Main Screen:
Click the open folder button, click DemoRace.nmr in the file list then click 'Open' button.

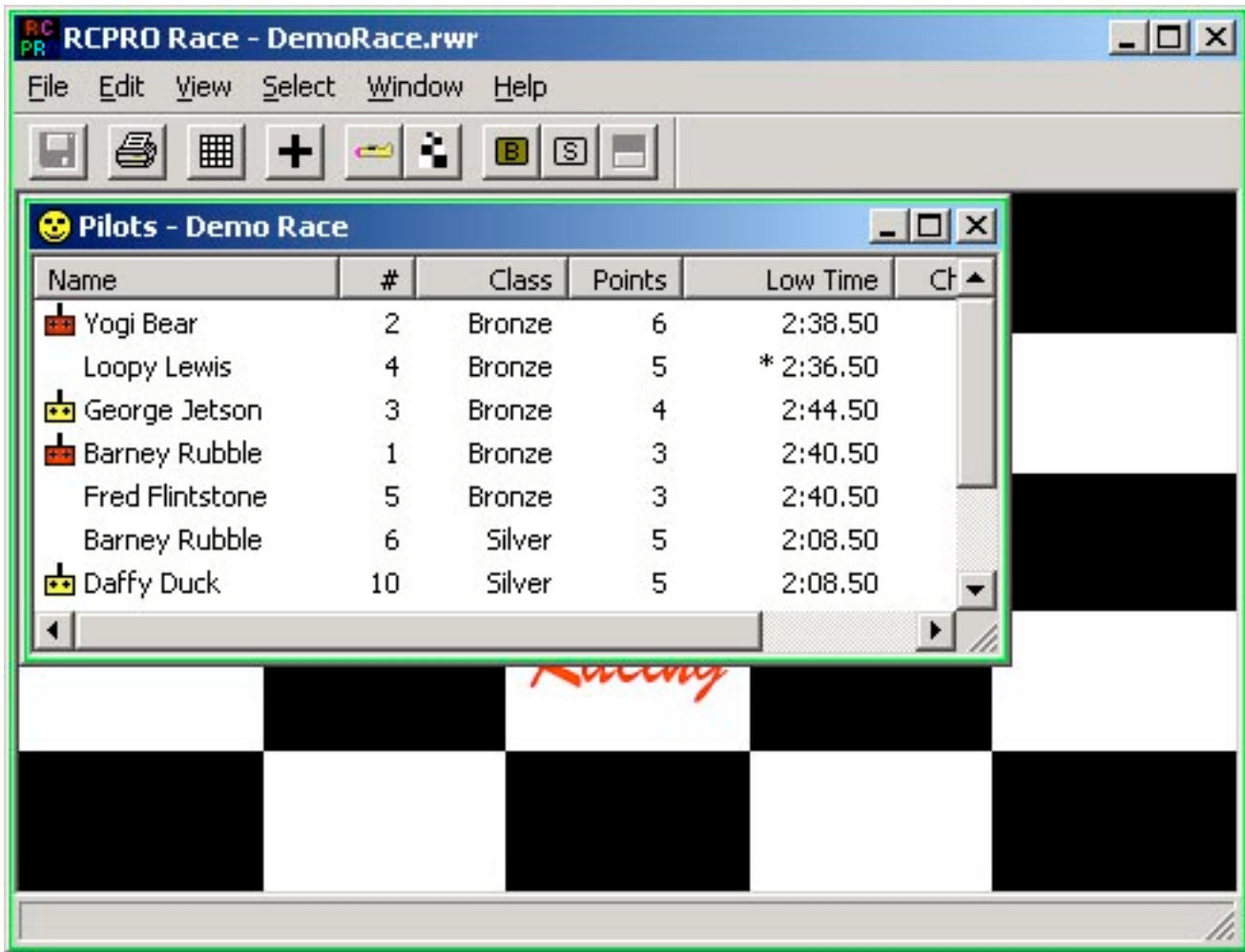


Three Views of Race

When you open a race file, you will see the main view of the race, the Pilots. If this view is closed, the race file is closed. We will take a look at the additional views later. First, let's look at the pilots view.

NOTE: The menu and toolbar changes depending on which view is currently active (being displayed in front). To do any operation on the Race File, the Pilots View must be active.

Pilots View



Pilots View Toolbar

The Pilots View Toolbar has 6 or more buttons.










- Save File – Used to save the race file. Enabled when file changes have been made.
- Print – Print Pilot View in it's current sorting order. How to sort is described later.
- Matrix – Generate race matrix. Enabled when enough pilots are registered.
- Add – Add (register) a new pilot for the race.
- Planes View – Bring the Planes View to the front of the windows.
- Heats View – Bring the Heats View to the front of the windows.

- View Class Subset Buttons – If your race has more than one class, buttons will restrict views to a single class. The last button will display all classes. In this sample of the toolbar, all classes are currently being displayed so the display all button is disabled.

Pilots View

Let's take a look at the information you see in the Pilots View. To the left of the pilots name may be various icons indicating some condition that exists for the pilot. They are:

-  Has not paid entry fee
-  Has not signed waiver
-  Primary plane has not been safety checked
-  Has no primary plane
-  Radio frequency conflict(s) in a different class
-  Radio frequency conflict(s) in the same class
-  Pilot is registered but not actively flying. (Will not be included in matrix)

Notice that the window is not large enough to display all the information so it has horizontal and vertical scroll bars. You may increase the window size to see more. The default sorting order of pilots is their score. You may sort this view by clicking on the any column header. For example if you want to see the pilots in order of their radio frequencies, click on 'Chan'.

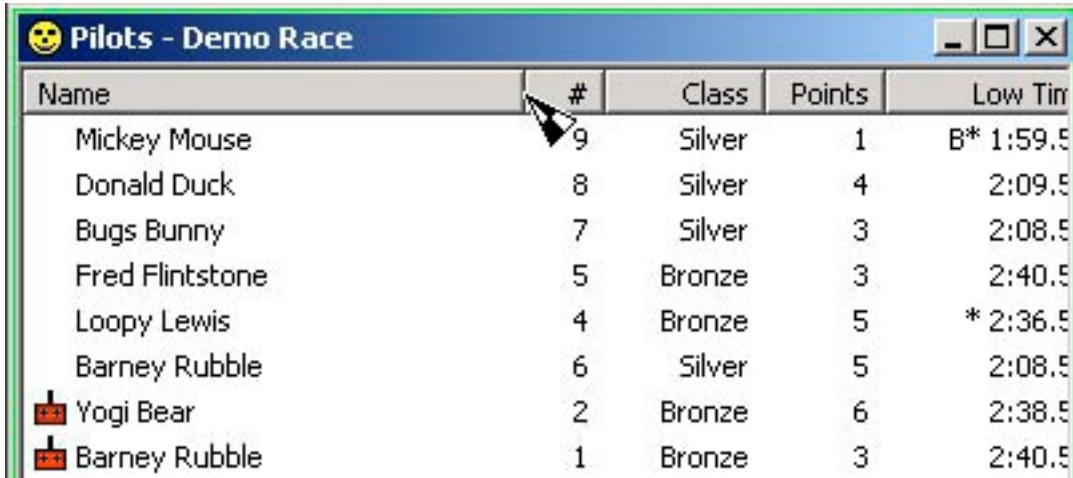


Name	#	Class	Points	Low Time	Chan
Mickey Mouse	9	Silver	1	B* 1:59.50	5
Donald Duck	8	Silver	4	2:09.50	7
Bugs Bunny	7	Silver	3	2:08.50	8
Fred Flintstone	5	Bronze	3	2:40.50	21
Loopy Lewis	4	Bronze	5	* 2:36.50	27
Barney Rubble	6	Silver	5	2:08.50	53
 Yogi Bear	2	Bronze	6	2:38.50	54
 Barney Rubble	1	Bronze	3	2:40.50	54
 Daffy Duck	10	Silver	5	2:08.50	60
 George Jetson	3	Bronze	4	2:44.50	60

The Low Time column has some indicators also. A double asterisk (*) indicates this is the lowest time in the class. A 'C' indicates the pilot has one cut on their fastest time. A 'B' indicate the pilot had a breakout on their fastest time.

B* 1:59.50
 2:09.50
 2:08.50
 2:40.50
 * 2:36.50
 2:08.50
 2:38.50

In any view, the column width may be adjusted by grabbing the column separator with the mouse and moving it left or right. If some pilots have long names, you may wish to make the name column wider.

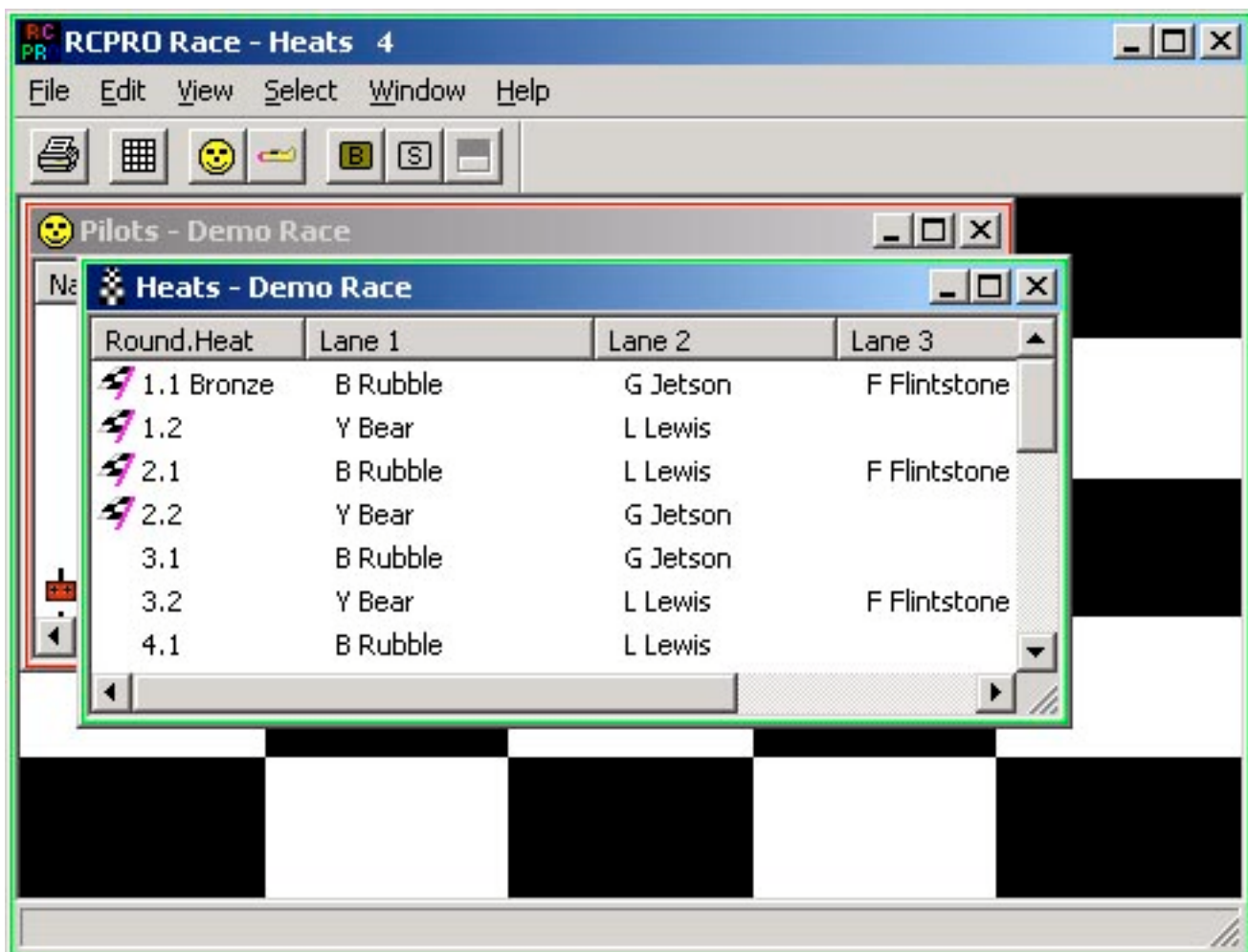


Name	#	Class	Points	Low Tim
Mickey Mouse	9	Silver	1	B* 1:59.5
Donald Duck	8	Silver	4	2:09.5
Bugs Bunny	7	Silver	3	2:08.5
Fred Flintstone	5	Bronze	3	2:40.5
Loopy Lewis	4	Bronze	5	* 2:36.5
Barney Rubble	6	Silver	5	2:08.5
Yogi Bear	2	Bronze	6	2:38.5
Barney Rubble	1	Bronze	3	2:40.5

The remaining information columns need no explanation. Now lets look at the other 2 views

Heats View – Heat Sheets

Once we have generated a matrix, the Heats View is available.



Round.Heat	Lane 1	Lane 2	Lane 3
1.1 Bronze	B Rubble	G Jetson	F Flintstone
1.2	Y Bear	L Lewis	
2.1	B Rubble	L Lewis	F Flintstone
2.2	Y Bear	G Jetson	
3.1	B Rubble	G Jetson	
3.2	Y Bear	L Lewis	F Flintstone
4.1	B Rubble	L Lewis	

The Heats View toolbar is different than the Pilots View in 3 ways:

- There is no Save button
- There is no Add button
- There is a button to bring the heats view to the front.

The default information in the Heats View is Heat Sheets. The Heat Sheets shows which pilots fly in which heats.

Note that the pilots middle initial is displayed here to differentiate pilots with the same first initial and last name.

The Round.Heat column has some indicators:

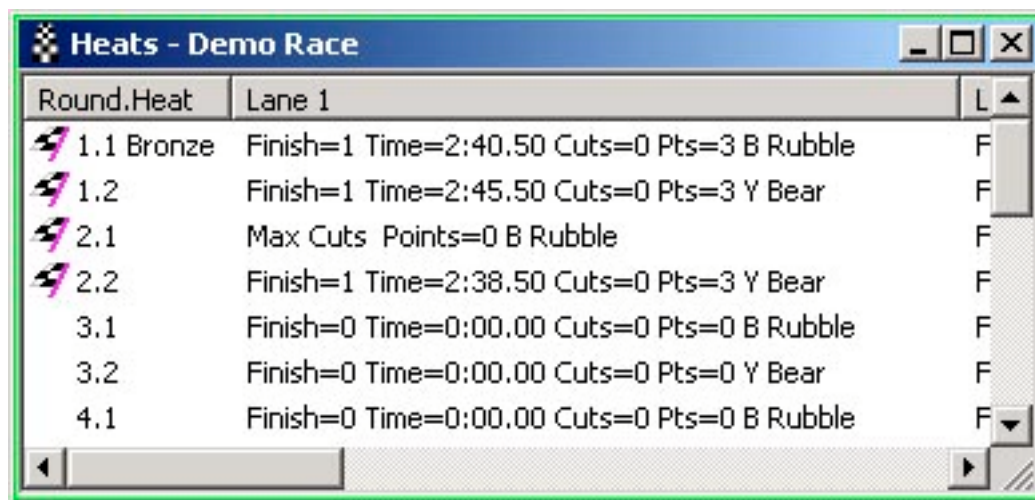
- ☑ 1.1 Bronze
- ☑ 1.2
- ☑ 2.1
- ☑ 2.2
- 3.1
- 3.2
- 4.1

The checked flag indicates the round has completed. Completed means the results have been entered. In this example, the first 4 heats have been completed. When an entire round has been completed, the scores will appear in the Pilots View.

The Class (Bronze for this example) is also displayed for the first Round.Heat.

The alternate view for the Heats View is Heat Cards. This shows all the details of the heats.

Heats View – Heat Cards

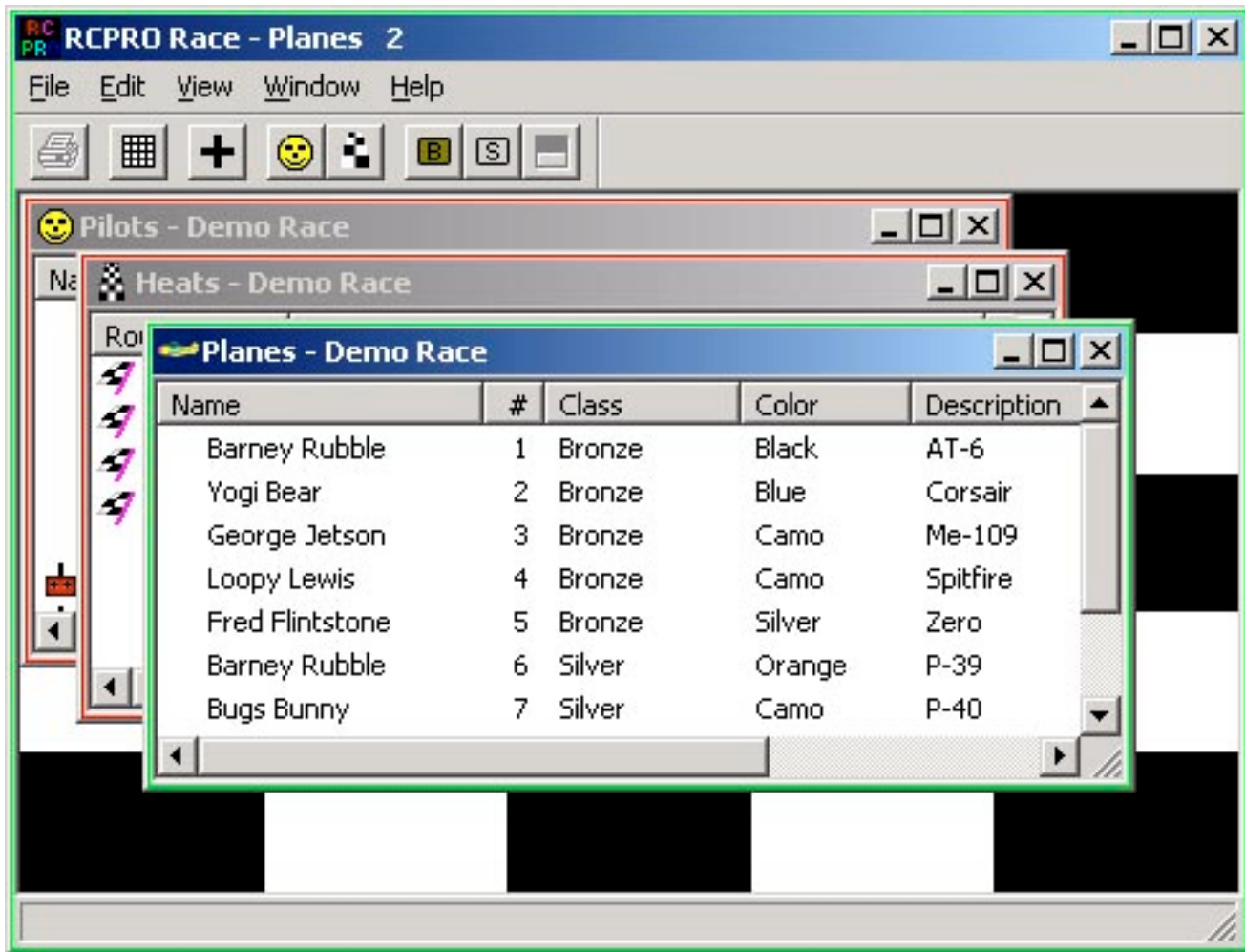


Round.Heat	Lane 1	L
☑ 1.1 Bronze	Finish=1 Time=2:40.50 Cuts=0 Pts=3 B Rubble	F
☑ 1.2	Finish=1 Time=2:45.50 Cuts=0 Pts=3 Y Bear	F
☑ 2.1	Max Cuts Points=0 B Rubble	F
☑ 2.2	Finish=1 Time=2:38.50 Cuts=0 Pts=3 Y Bear	F
3.1	Finish=0 Time=0:00.00 Cuts=0 Pts=0 B Rubble	F
3.2	Finish=0 Time=0:00.00 Cuts=0 Pts=0 Y Bear	F
4.1	Finish=0 Time=0:00.00 Cuts=0 Pts=0 B Rubble	F

Note that the details require a wide column so you will have to scroll horizontally to see all the lanes.

This view is used if a quick check of heat results is required and when you wish to print heat cards. Keep in mind that the Heats View toolbar has only one print button. Whether you print Heat Sheets or Heat Cards depends on the current view when the print button is pressed.

Planes View

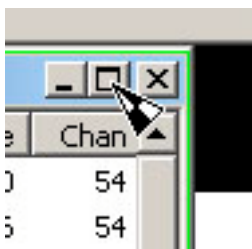


This view may be used very little after the initial registration of planes is complete. Note that the Planes View print is disabled. Currently there is no support for printing plane information. As with the Pilots View, you may sort on any column.

Additional User Interface Control

Views may be closed instead of selecting other views which come to the front. If you close views, keep in mind that if you close the Pilots View, you close the race file.

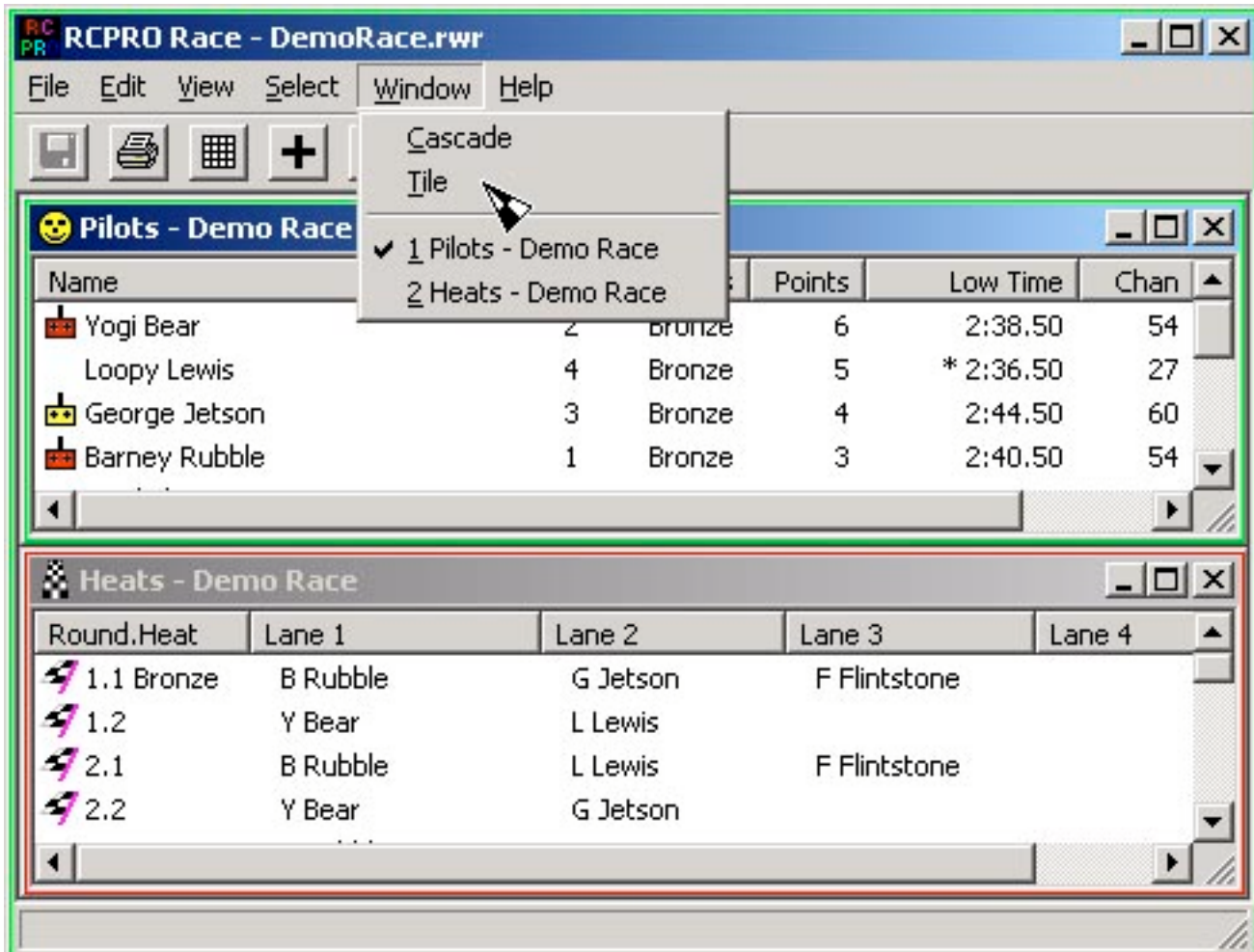
All the window layouts shown so far are the default Windowing option, 'Cascade Windows'. You may maximize the views to see more by clicking on a view Maximize button.



When you Maximize any view, all views get the entire viewing area. You can still select any view you want to see. The other views will be totally hidden behind the current view. You can put the views back to their previous state by clicking on the view Restore button.

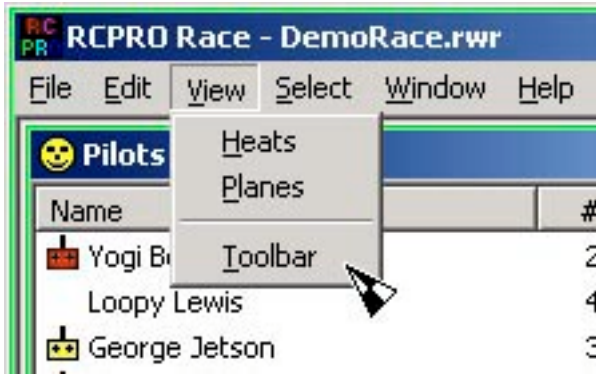


You can select the Windowing option 'Tile' from the Main Menu Windows pulldown Menu.

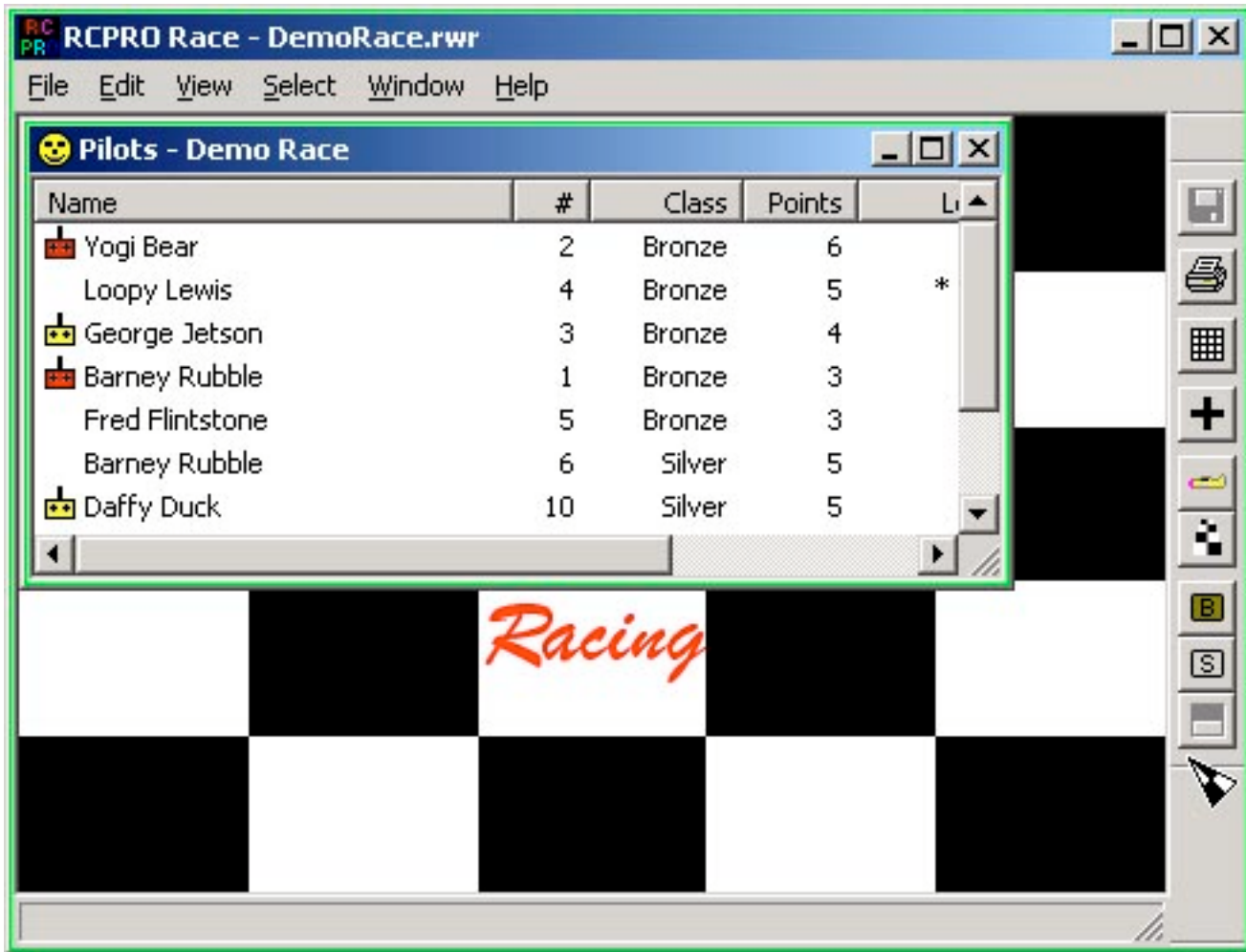


NOTE: There are many ways to select views other than the toolbar buttons. You may prefer to use them instead of the toolbar.

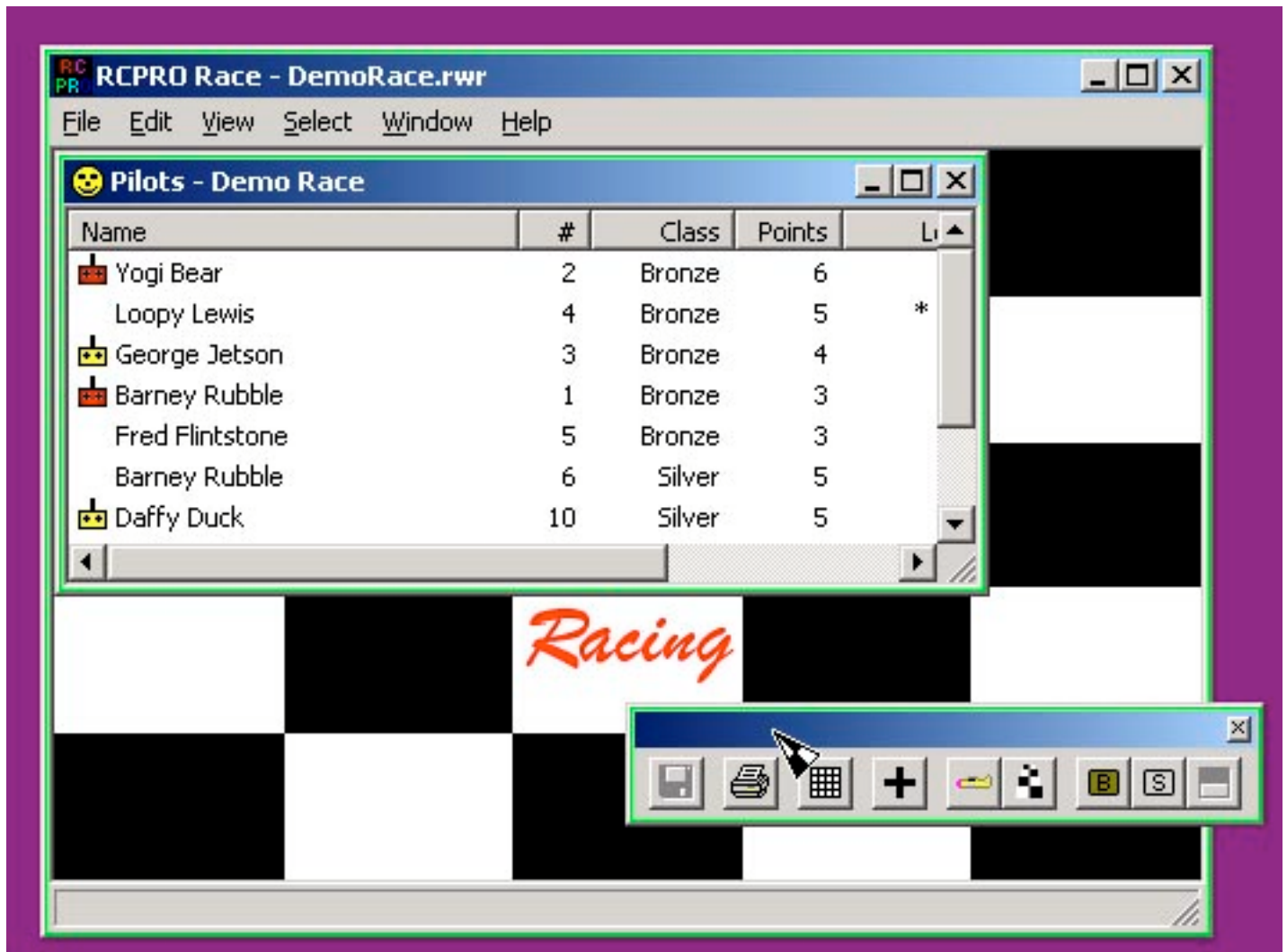
While we are on the subject of toolbars, you may choose to not have a toolbar by clicking on the Main Menu View pulldown menu item Toolbar.



You may dock the toolbar by dragging it with the mouse another position on the main window.

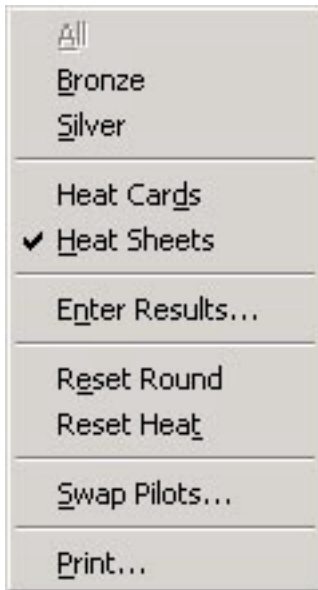


Or you may undock the toolbar by dragging it with the mouse.



This software has a feature called 'Context Menus'. These are menus that popup when you click Mouse Button 2 (right mouse button). The menu that pops up will vary depending on where the mouse pointer is when you click mouse button 2. The menu will have only items that apply to the window you are currently over. The menu items available will depend on the condition that currently exists in the window, such as an item being selected.

If you click mouse button 2 on a Round.Heat item (selecting it) in the Heats View window, you will get the Heats View Context Menu with items enabled that are currently available.



To get the Context Menu for the Race you can click Mouse Button 2 on the checkered background of the main window.



This concludes the Introduction. You should be able to open the DemoRace file and display information in various formats. Now we will go through the steps required running a race.

Running a Race

Running a race is broken down into 3 phases:

- Prepare
- Execute
- Finish

Prepare

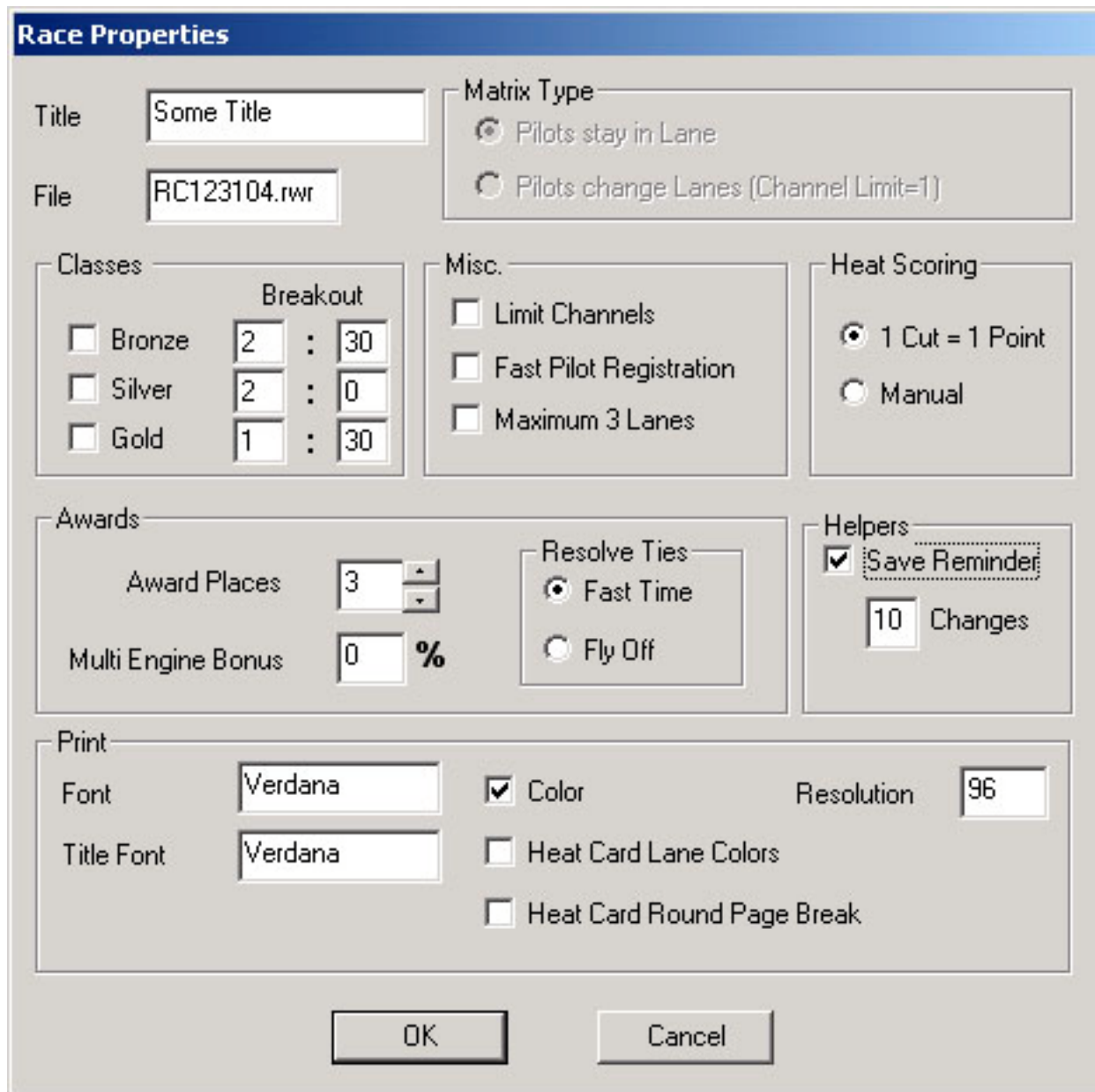
To prepare for a race:

- Create Race File
- Register Pilots
- Register Planes
- Generate Matrix
- Print Pilot Info Cards
- Print Heat Cards
- Print Heat Sheets

Create Race File

Start up the program and click on the New File button (The blank white document)

Enter the race properties in the dialog.



The image shows a 'Race Properties' dialog box with the following sections and controls:

- Title:** Text field containing 'Some Title'.
- File:** Text field containing 'RC123104.rwr'.
- Matrix Type:** Radio buttons for 'Pilots stay in Lane' (selected) and 'Pilots change Lanes (Channel Limit=1)'.
- Classes:** A table with columns for class name, breakout count, and breakout time.

Class	Breakout	Time
<input type="checkbox"/> Bronze	2	30
<input type="checkbox"/> Silver	2	0
<input type="checkbox"/> Gold	1	30
- Misc.:** Checkboxes for 'Limit Channels', 'Fast Pilot Registration', and 'Maximum 3 Lanes'.
- Heat Scoring:** Radio buttons for '1 Cut = 1 Point' (selected) and 'Manual'.
- Awards:** 'Award Places' spinner set to 3, 'Multi Engine Bonus' spinner set to 0%.
- Resolve Ties:** Radio buttons for 'Fast Time' (selected) and 'Fly Off'.
- Helpers:** Checkbox for 'Save Reminder' (checked) and a spinner for 'Changes' set to 10.
- Print:** 'Font' and 'Title Font' text fields both set to 'Verdana'. Checkboxes for 'Color' (checked), 'Heat Card Lane Colors', and 'Heat Card Round Page Break'. 'Resolution' spinner set to 96.

Buttons for 'OK' and 'Cancel' are at the bottom.

The preferences are:

- Title – Keep the title short to avoid printing width problems
- File – The default file name will be 'RC' followed by the GMT date.
- Matrix Type – In this version, there is only one Matrix type so you cannot change it.
- Classes – You must select at least one class from the standard RCPRO classes.
- Breakout for each class being flown in minutes and seconds. If you are not using breakout times, set to 0:0
- Limit Channels – Check if you want to limit the quantity of radio frequencies. If checked, an additional dialog will appear to set the limits.
- Fast Pilot Registration – This option is for getting a race started quickly. You need only enter a pilot AMA number, name and radio frequency to get a race going quickly. You would probably use this for small club races. **WARNING!** – This option assumes the Planes are safety checked.
- Maximum 3 Lanes – Limit the matrix to 3 lanes instead of 4
- Heat Scoring
 - 1 Cut = 1 Point – Pilots can get one cut and continue racing but get only one point for finishing.
 - Manual – The program will score pilots but you can change the scores.
- Award Places – How many places will get awards. For example, if you were giving trophies for 1st, 2nd and 3rd, you would enter 3.
- Multi engine bonus. Percentage of points added to score if pilot flies multi-engine aircraft in ALL heats. If pilot flies backup in at least one heat, the aircraft assigned to the pilot should be changed to single engine.
- Resolve Ties – Check the way ties will be resolved to determine finish position at the end of the race. Until the race is finished, Fast Time determines the sort order for pilots when sorted on Points.
- Save Reminder – If checked, program will remind you to save your race file every nn changes.
- Heat Card Lane Colors - Display wing flag colors on heat card lane numbers, if you are using wing flags for plane ID.
- Print – The print settings are described in the Section '**Printing**'.

Register Pilots

Click on the Add button (plus sign). You will get the Pilot dialog. Here you enter general information about the pilot and information specific to this race. You cannot complete the registration of a pilot until all required information is entered. For example, you cannot register a pilot without a name, radio frequency, class entered, etc. If you have ever entered the pilot in a previous race, the pilot file (RCPRO_Pilots.NMP) will still contain the pilot information.

If this is the case, you can enter the pilots AMA number by typing it in and tabbing to the next field or selecting it from the AMA number drop down list.

The image shows a software dialog box titled "Register Pilot". On the left side, there is a section labeled "Data on File" which contains several input fields: "AMA", "RCPRO", "First Name", "Last Name", and "Address". The "RCPRO" field is currently open, displaying a list of alphanumeric strings: "AAAAA", "BBBBB", "CCCCC", "DDDDD", "EEEE", "FFFFF", "GGGGG", and "HHHH". The "CCCCC" option is highlighted in blue. The "AMA" field has a small dropdown arrow next to it. The "First Name", "Last Name", and "Address" fields are empty text boxes.

A pilot is assigned a sequential Pilot Number that uniquely identifies a pilot flying in a class. If a pilot registers in multiple classes, they will be assigned multiple Pilot Numbers. If you are using a registration form with sequential pilot numbers, you may want to have pilots flying in multiple classes, enter their name multiple times. Then you can register the pilots using this software from the paper registration form and the pilots will be assigned the same pilot number as on the form.

If the pilot was entered in a previous race and information about the pilot has changed since last registered, such as address, phone number, etc. it may be changed now.

Register Pilot

Data on File

AMA: [CCCCC] ▼

RCPRO: [33D]

First Name: [George] M.I.: [E]

Last Name: [Jetson]

Address: [33 Speedo Ct.]

City: [Los Angeles] ▼

State\Prov: [CA] ▼

Postal Code: [33333]

Contact

Phones

Day: [111-555-3333]

Night: [111-555-3333]

Cell: [111-555-2222]

E-Mail: [Gorg@freebie.com]

Pager: [111-555-6677]

Category:

Data for Race

Pilot Number: [11]

Channel: [-1] ▲ ▼

Class

Bronze

Silver

Gold

Status

Active

Paid

Signed Waiver

Disqualified

OK Cancel

Note that (Radio Frequency) defaults to -1 to force you to enter a channel. Channel zero is valid.

Pilots flying the 'Spread Spectrum' type radio equipment do not have a specific channel. Pseudo channels 100 - 199 are used for these type radios. If you have a racing team that wants to be in the same matrix lane, assign them the same channel just as you would for real channel numbers.

Pilot Status has 4 conditions:

- Active – Pilot is ready to race. It is always a good idea to mark a pilot who is NOT ready to race (maybe out of aircraft) as NOT Active. A pilot who is NOT Active, will NOT be included in a Matrix but will appear in the results if they have any points. This setting is of use when many pilots cannot continue racing and you wish to re-matrix the remaining heats to compress out the pilots who will not be flying. You would not do the re-matrix unless a significant number of pilots had become inactive. When you re-matrix, pilots may change lanes. If you are using wing flags for lane identification, pilots who change lanes will have to remove them and add new ones. In addition, when you re-matrix, you must also print the following:
 - Heat Cards
 - Heat Sheets
 - Pilot Info Cards
- Paid – The pilot has not paid the entry fee or there is no entry fee.
- Signed Waiver – The pilot has signed the Safety Waiver Document.
- Disqualified - After a race starts a pilot may do something to get themselves disqualified. This will zero points.

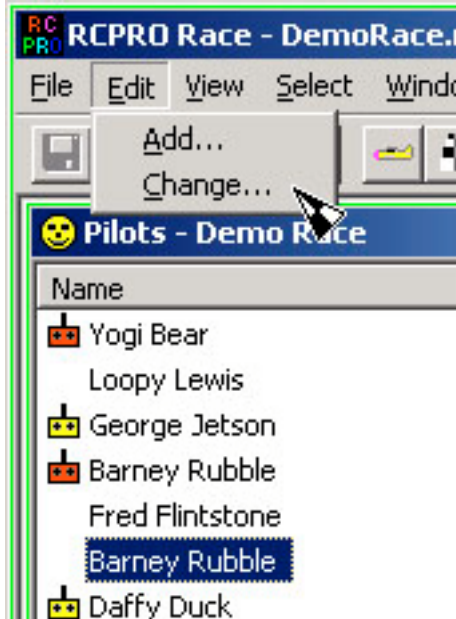
A 'Category' input allows you to categorize pilots. This input, which would usually be one letter or number, may help you if you are manipulating the heats matrix after it is generated. For example, you are running a race with pilots from Arizona and California. You could categorize the pilots as 'A' or 'C'. Then you can more easily see the effects of matrix changes to get the best mix of Arizona pilots flying against California pilots. This category only displays on the matrix view. It is not printed on any forms.

NOTE: There is a special category "DQ" that is used to disqualify a pilot after the race has started. This might happen if their aircraft was found to be out of specification. This will remove the pilot from the standings and give them zero points.

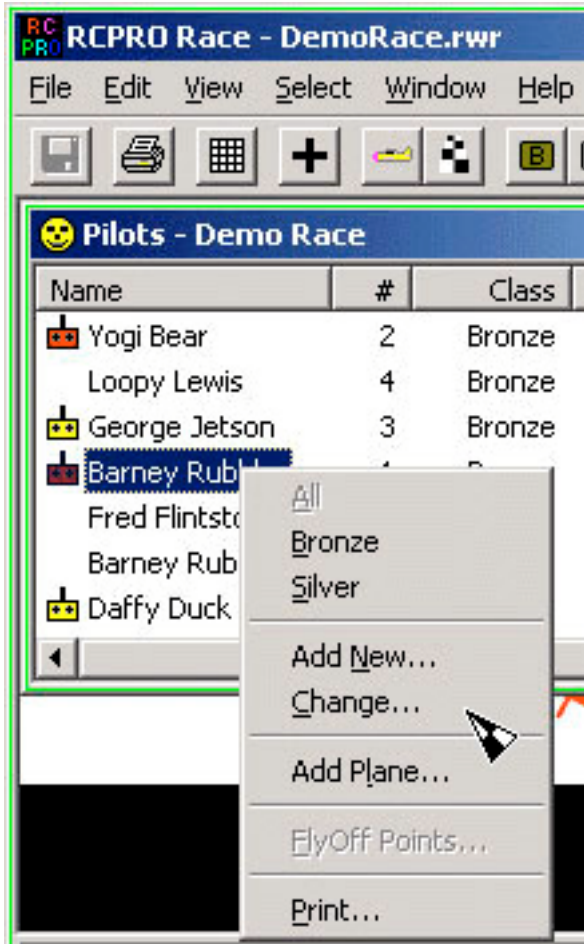
The pilot status affects the Pilot View display. You will see the following:

After pilots are registered. They may be changed by opening the pilot in the Pilot View and entering the changed information. There are several ways to open a pilot;

- 1) Select the pilot by clicking on the pilot's name. Then select main menu Edit, Change.



- 2) Select the pilot by clicking on the pilot's name with Mouse Button 2 (Right Mouse Button). Then select menu Change.



3) The easiest way is to double click the pilot's name.

Register Planes

When a pilot is registered, a plane is also registered to the pilot. The plane is assumed to have not been safety checked. To update the registered planes, select the Planes view and select the plane. Planes are selected from the Planes View the same way pilots are selected. When you select a plane you get the Plane dialog. Enter any information you have. The Type, Main Color and Engine may be entered if you chose to. They may be typed in if the drop down list does not contain what you want.

Modify Plane

Type: Corsair

Main Color: Blue

Engine: Super Tigre

Pilot Number: 1

Safety check

Multi Engine

OK Cancel

Note: If a pilot's plane is not safety checked, the pilot and plane list will indicate this unsafe condition and you will not be able to generate a matrix until it is corrected.

Planes - Demo Race

Name	#
Barney Rubble	1
Yogi Bear	2
 George Jetson	3
Loopy Lewis	4
Fred Flintstone	5
Barney Rubble	6

Generate Matrix

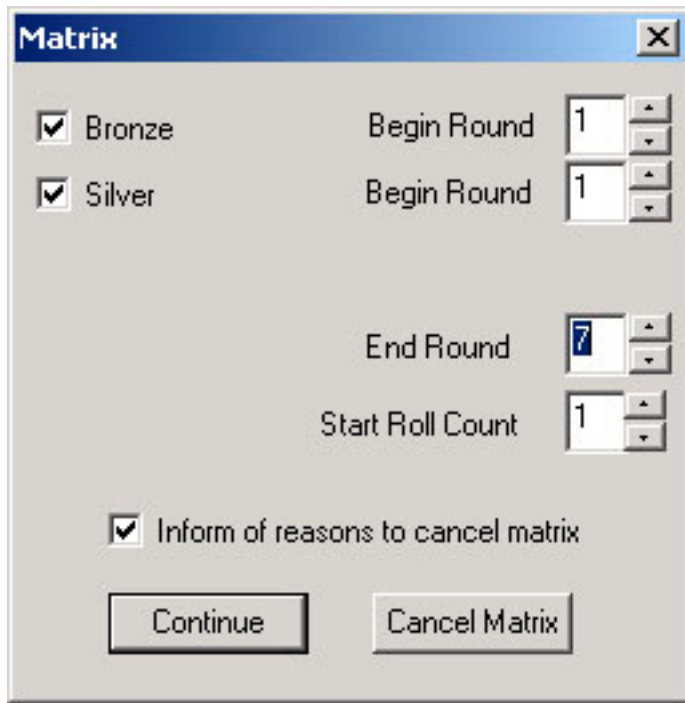
Once all pilots and planes have been registered, you may generate the matrix by clicking on the Matrix button.



You will get a dialog asking you:

- Begin Round – Must be 1 for the first matrix generated
- End Round – A good idea to matrix more than you will need. You can finish a race early.
- Classes to be matrixed.

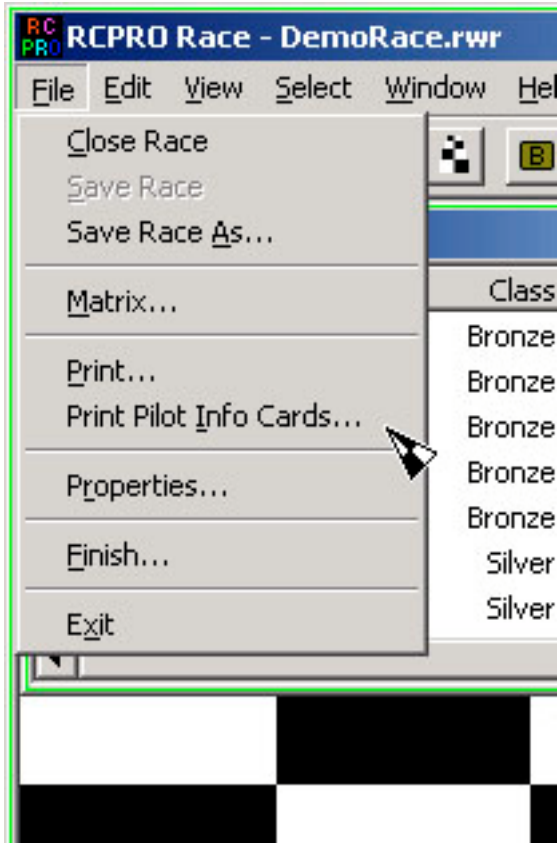
- Which roll count to output matrix on. This is for having the same pilots in two separate races. (Saturday/Sunday) You might fly 5 round on Saturday and generate the matrix for Sunday starting at Roll Count 6. This will eliminate the Sunday heats being a replay of Saturday.
- Indication that you want to be informed of reasons you might not want to matrix. Like pilots have not signed the Waiver.



Once the matrix is generated, the Heats View will be enabled to see the matrix.

Print Pilot Info Cards

Now that we have a matrix, we can print the Pilot Info Cards. These cards are usually printed on card stock, cut out and given to each pilot. The pilot can confirm the information on the cards. The cards then serve as a reminder of which heats they fly in. The pilots may also jot down results on the cards when a heat is complete. You print the pilot info cards by selecting the Pilot View, then drop down the File menu and clicking on Print Info Cards...



A pilot info card looks like this.

Name	#	Chan	Class	AMA	RCPRO	Lane
Yogi Bear	2	54	Bronze	800001		1

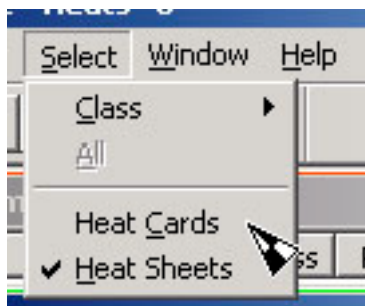
Heats				
2	4	6	8	10
R1H2	R2H2	R3H2	R4H2	R5H2

Print Heat Cards

To print Heat Cards, select the Heat View by clicking the Heat View button on the toolbar



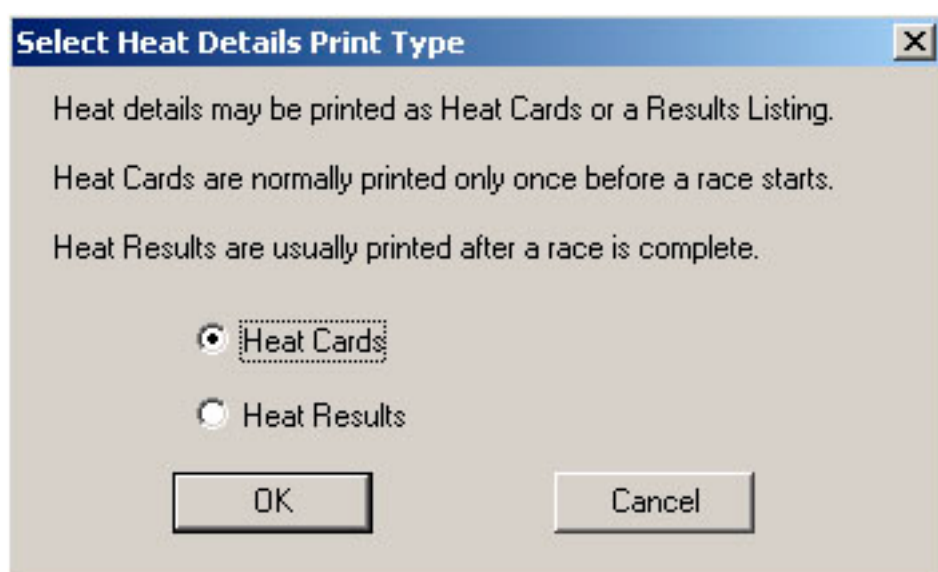
Then select Heat Cards by clicking in the Select Menu, Heat Cards.



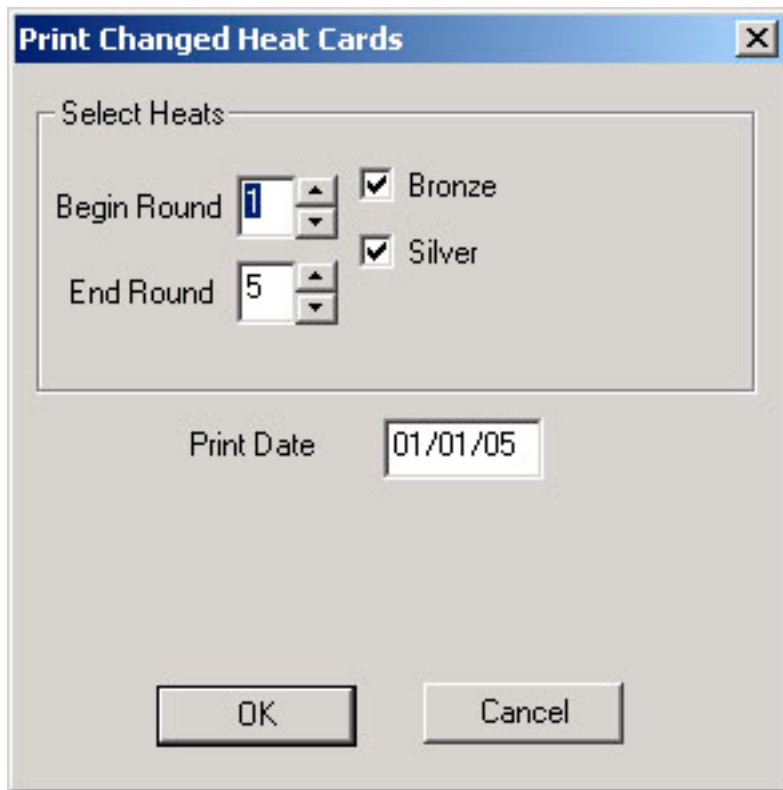
Then click the Print button on the toolbar



You will get a dialog asking you what type of Heat Details you want to print. Select Heat Cards.



You will then get a dialog asking which rounds, classes to print and the date you want on the cards.



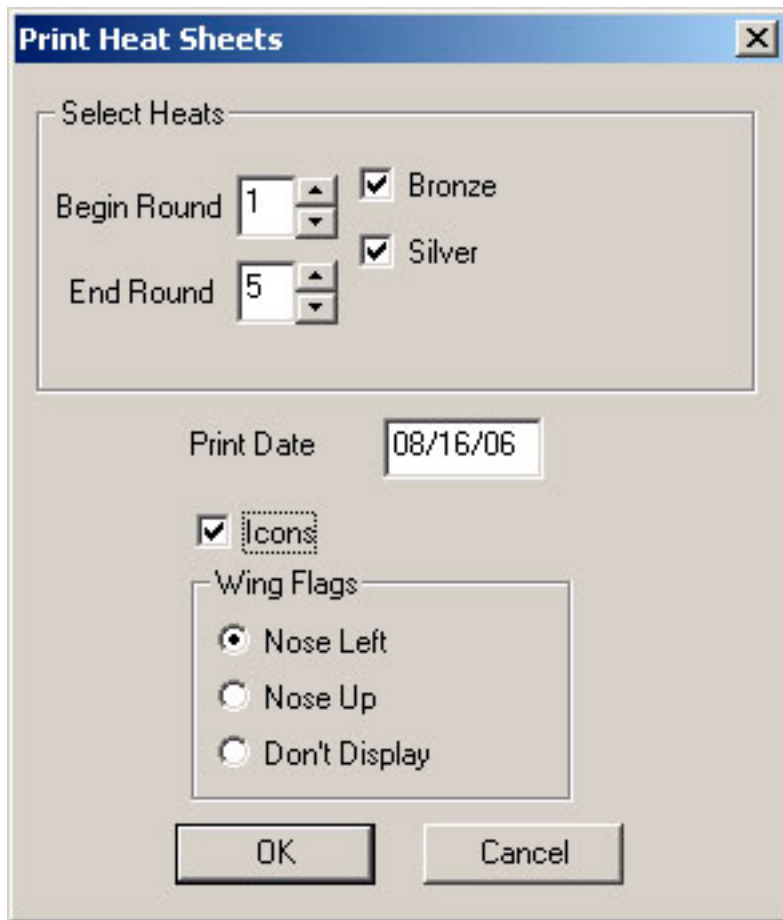
Heat Cards are normally printed on card stock, cut out and sent to the flight line. A heat card looks like this.

6 Silver R3H2 Demo Race 04/29/06 Breakout 2:00							
Ln	Pilot	Ch	Fin	M:S.HH	Cts	DN	Pts
1	B Bunny	8					
2	M Mouse	5					
3	D Duck	60					
4							









Print Heat Sheets

The Heat Sheets (actually one continuous sheet which spans multiple sheets of paper) are printed like Heat Cards except the Heat Sheets view is selected before printing. When printing Heat Sheets, there are a few minor differences in the dialogs you will respond to. The Print Heat Sheets dialog has two additional items:

- Show Wing Flags – Print images over each lane showing how wing flags are placed depending on your lane.
- Icons – Print the icons seen in the Heat Sheets View. This will show which heats are finished if you are re-printing Heat Sheets after starting a race.



A Heat Sheets printout looks like this.

Heats - Demo Race						
						
		Bronze	Lane 1	Lane 2	Lane 3	Lane 4
	1	R1H1	B Rubble	G Jetson	F Flintstone	
	2	R1H2	Y Bear	L Lewis		
	3	R2H1	B Rubble	L Lewis	F Flintstone	
	4	R2H2	Y Bear	G Jetson		
	5	R3H1	B Rubble	G Jetson		
	6	R3H2	Y Bear	L Lewis	F Flintstone	

This example shows only the first 6 heats. There normally would be multiple printed pages which you can tape together to make one continuous Heat Sheet. Note that this race is using wing flags for lane identification by the pylon judges.

Execute

To execute a race:

- Write Heat Results
- Enter Heat Results
- Print Current Standings
- Respond to Pilot Questions

Write Heat Results

At the flight line or judges timing station, the results of each heat are written on the Heat Card immediately after the heat is finished. Written on the card are:

- Fin – Finish position
- M:S:HH – Time in minutes, seconds and hundredths
- Cts – Cuts
- DN – Enter 'S' for Did Not Start, 'F' for Did Not Finish
- Pts – Points - 0 for 2 cuts, DNS or DNF. First place gets 3 if 3 lanes heats, 4 for 4 lanes heats, etc.

Enter Heat Results

To enter heat results from the Heat Card, Select the Heats View by clicking the Heats View Button on the toolbar.



Then select the heat to be entered. You open a heat the same way you open a pilot or plane. The easiest way is to double click on the heat Round.Heat number in the left column which matches the Rnd Heat numbers on the Heat Card. When you open a heat you get the Heat Update dialog.

Enter Results Round 3 Heat 2

Lane 1 Yogi Bear Blue Corsair

Cuts: 0 OR Did Not DNS DNF OR Time: 2 : 40 . 50 Finish: 0

Lane 2 Loopy Lewis Camo Spitfire

Cuts: 0 OR Did Not DNS DNF OR Time: 2 : 40 . 50 Finish: 0

Lane 3 Fred Flintstone Silver Zero

Cuts: 0 OR Did Not DNS DNF OR Time: 2 : 40 . 50 Finish: 0

OK Cancel

Times are pre-set to times which are typical for the class being entered. This example is for a 3 lane heat so there are only 3 pilots shown. If a pilot Did Not Start or Did Not Finish, you need only click on them. If a pilot got 2 cuts, you need only set Cuts to 2. For all other cases, the Finish position and Time must be set. If there was no time measured, you should set 0:0.00 for a time. When you click on OK, you will get the following confirmation dialog. You should confirm that the scores on the Heat Card agree and resolve any differences with the person who filled out the Heat Card.

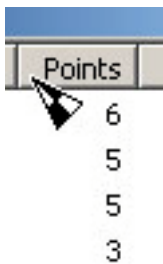


Print Current Standings

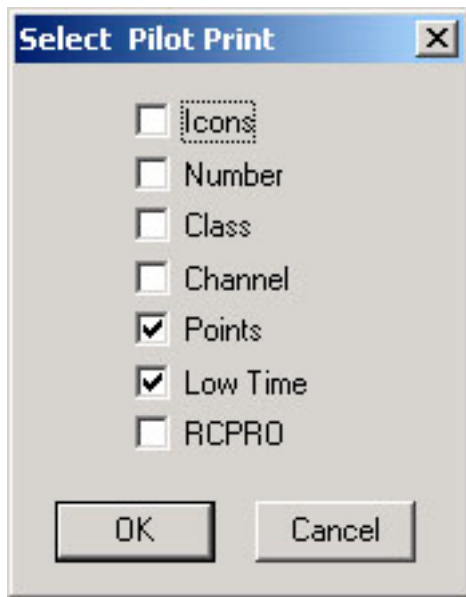
You will probably want to print the current point standings periodically throughout the race. To print pilot point standings, select the Pilot View. If the Pilot View is not already the current view, click on the Pilot View button on the toolbar.



Sort the view by pressing on the Points column header.



Press the Print button on the toolbar. You will get a dialog to select the columns you wish to print. The items checked are probably the ones you want.



The pilot standings print will be one or more sheets that you can tape together.



www.rcpro.org

Demo Race

Ordered By Points Within Class

After 2 Rounds			
Bronze	Name	Low Time	Points
1	Yogi Bear	2:38.50	6
2	Loopy Lewis	** 2:36.50	5
3	George Jetson	2:44.50	4
4	Barney Rubble	2:40.50	3
5	Fred Flintstone	2:40.50	3

After 2 Rounds			
Silver	Name	Low Time	Points
1	Barney Rubble	2:08.50	5
2	Daffy Duck	2:08.50	5
3	Donald Duck	2:09.50	4
4	Bugs Bunny	2:08.50	3
5	Mickey Mouse	B** 1:59.50	1

Respond to Pilot Questions

Pilots have questions during a race about procedures, conditions and events. Many of these questions can be quickly answered using this software. For example, a pilot might ask the question 'Who is on channel 24'. To answer this question, sort the Pilot View on the Channel column. You will easily see who is on Channel 24 and the class or classes they are flying in using Channel 24.

NOTE: For the previous example, make sure you are displaying all classes to get the correct information.

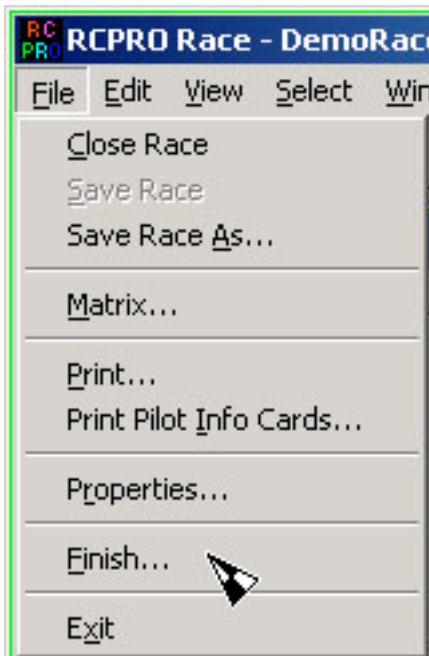
Finish

To finish a race:

- Enter final Heat Results
- Resolve Ties
- Print Requested Details

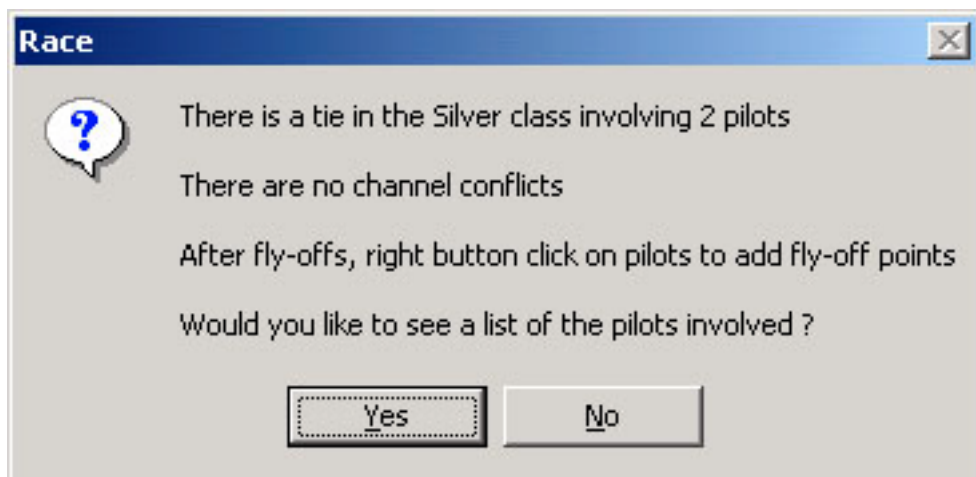
Enter Final Heat Results

The trigger to finish a race is the entry of the results for the final heat. If you are not flying all rounds generated, you may force a finish by clicking on the 'Finish' menu item in the Pilots View File Menu or the Race Context Menu.



Resolve Ties

The finish race trigger will check if you are resolving ties with fast times or fly-offs. If you are resolving ties with fast times, the Pilots Points Standing (Pilot View sorted by clicking on the Points column header) will sort by points and fast times so you already know the final race finish position for all pilots. If you are resolving ties with fly-offs, this software will check for ties within the Award Places you set when defining this race. If any ties exist, you will get information dialogs showing who is involved and if there are any radio frequency conflicts between tied pilots.

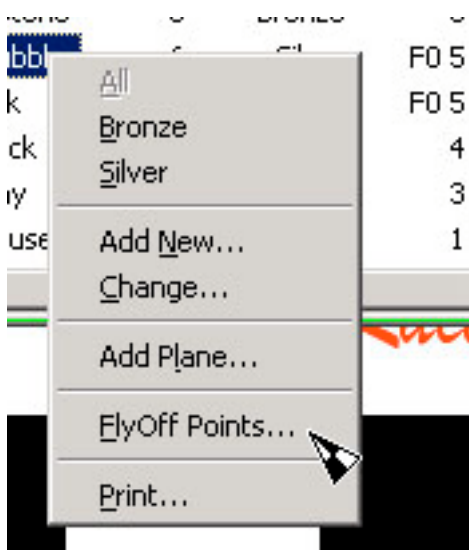


All pilots involved in ties will then have zero fly-off points indicated in the Pilot View.

Silver	F0 5	2:08.50
Silver	F0 5	2:08.50

You may then proceed with the fly-off heats. Note that blank heat cards are supplied in the HTML folder fly-off heats.

When fly-off heats are complete, you may enter fly-off points for the tied pilots by selecting the pilot with Mouse Button 2 and selecting the FlyOff Points menu item.



Then the Points Standing will be sorted by points and then fly-off points instead of using fast times. The fly off points are displayed in the Pilots View and prints. If you change your mind and decide you want to resolve ties using fly-offs, change the race properties to indicate this, then click on Finish.

Print Requested Details

Sometimes, pilots will request detailed results printouts. You may print detailed heat results for the entire race or just for an individual pilot. If you want to print for an individual pilot, get their Pilot Number from the Pilots View. To print heat details, select the Heat Cards from the Heats View and click the print button. In the first dialog, select Heat Details. You will then get a dialog asking if you want details for all pilots or just one. The heat details look similar to the heat card printout.

1 Silver R1H1 Demo Race 04/29/06 Breakout 2:00								2 Silver R1H2 Demo Race 04/29/06 Breakout 2:00							
Ln	Pilot	Ch	Fin	M:S.HH	Cts	DN	Pts	Ln	Pilot	Ch	Fin	M:S.HH	Cts	DN	Pts
1	B Rubble	53	1	2:08.50	0		3	1	B Bunny	8	1	2:08.50	0		3
2	D Duck	7	3	2:16.50	0		1	2	M Mouse	5	0	1:59.50	0		0
3	D Duck	60	2	2:10.50	0		2	3							
4								4							

This concludes what you need to know to use this software to run a race. Additional dialogs described in the section ‘**Printing**’. As you use the software, you will discover additional features.

Printing

Printing can be a source of serious problems. This software was tested on an Epson Stylus Color 440 printer. It is inexpensive and prints well on regular paper or card stock. This software does not detect what type of printer you have or your printer’s capabilities. There are so many printer variations, even among brands that it is impractical to try supporting a large number of ‘popular’ printers.

You have two Race File variables you can set to help deal with print problems:

- Color – If you have a black only printer set color off. You will lose the color highlighting benefits.
- Resolution – The Heat Cards and the Pilot Info Cards are supposed to print 4 to a sheet of card stock. If they do not, you can try adjusting this to make them smaller or larger.

Printing Problems

NOTE:

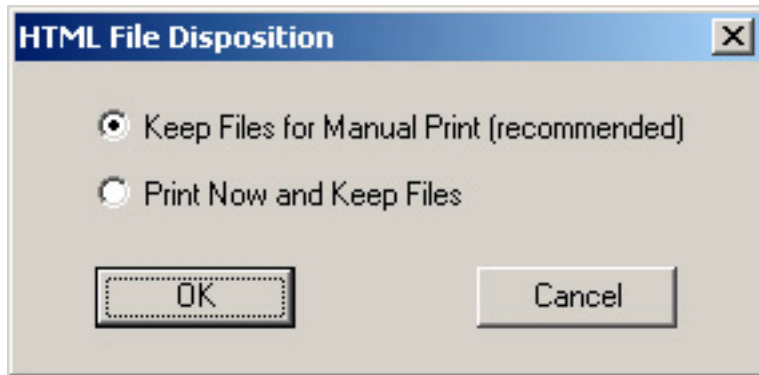
If you select the ‘Print Now and Keep Files’ printing option, the printing takes place in the background. Printing takes a lot of computer resources and the background printing process may take a long time. If you close the program before all the printed files are in the print job queue, you will lose them.

Multiple Pages

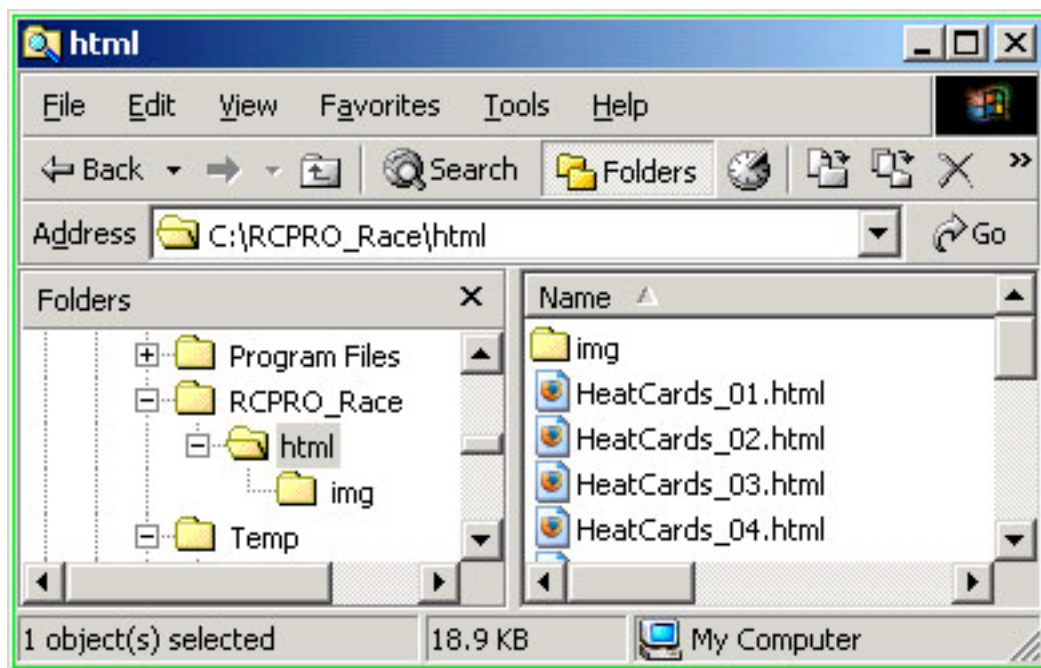
Some systems may have problems queuing up a large number of printed pages, such as Heat Cards. This usually happens on machines with limited memory or older versions of the Operating System and Internet Explorer. If you are having a problem using the ‘Print Now and Keep Files’ option, you can manually print the individual pages instead of queuing them for automatic print.

Manual Print

Select the 'Keep Files for Manual Print' option. This will generate the print page files but not queue up multiple copies of Internet Explorer running at the same time.



The generated HTML files will be in the RCPRO_Race\html folder. Display them using Windows Explorer.



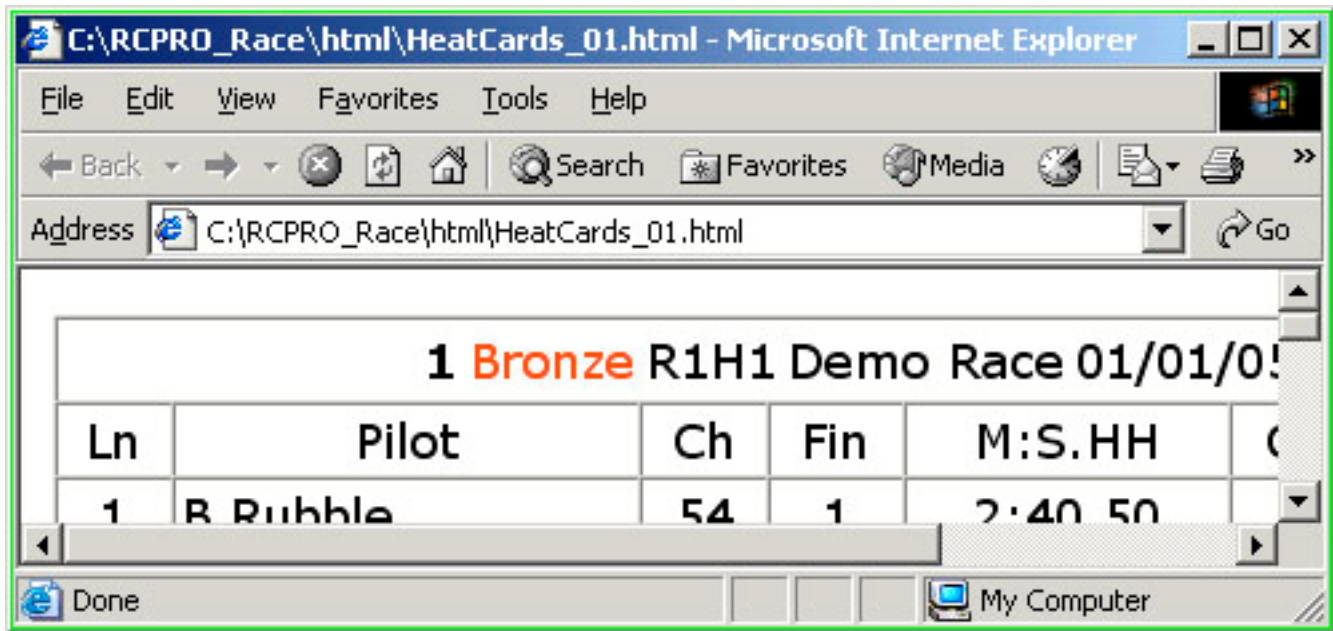
One at a time, double click to open the HTML files. When Internet Explorer is displaying the file, press the Internet Explorer Print button.



Give Internet Explorer enough time to get the file into the print queue. An icon will display on the Status Bar at the bottom of the window while the print queuing is taking place.



NOTE: You may make this process easier by leaving the Internet Explorer window open and changing the HTML file name in the address bar by typing over the page number 1,2,3 etc.



After changing the file name, press the Refresh button to view the next page so you can print it.



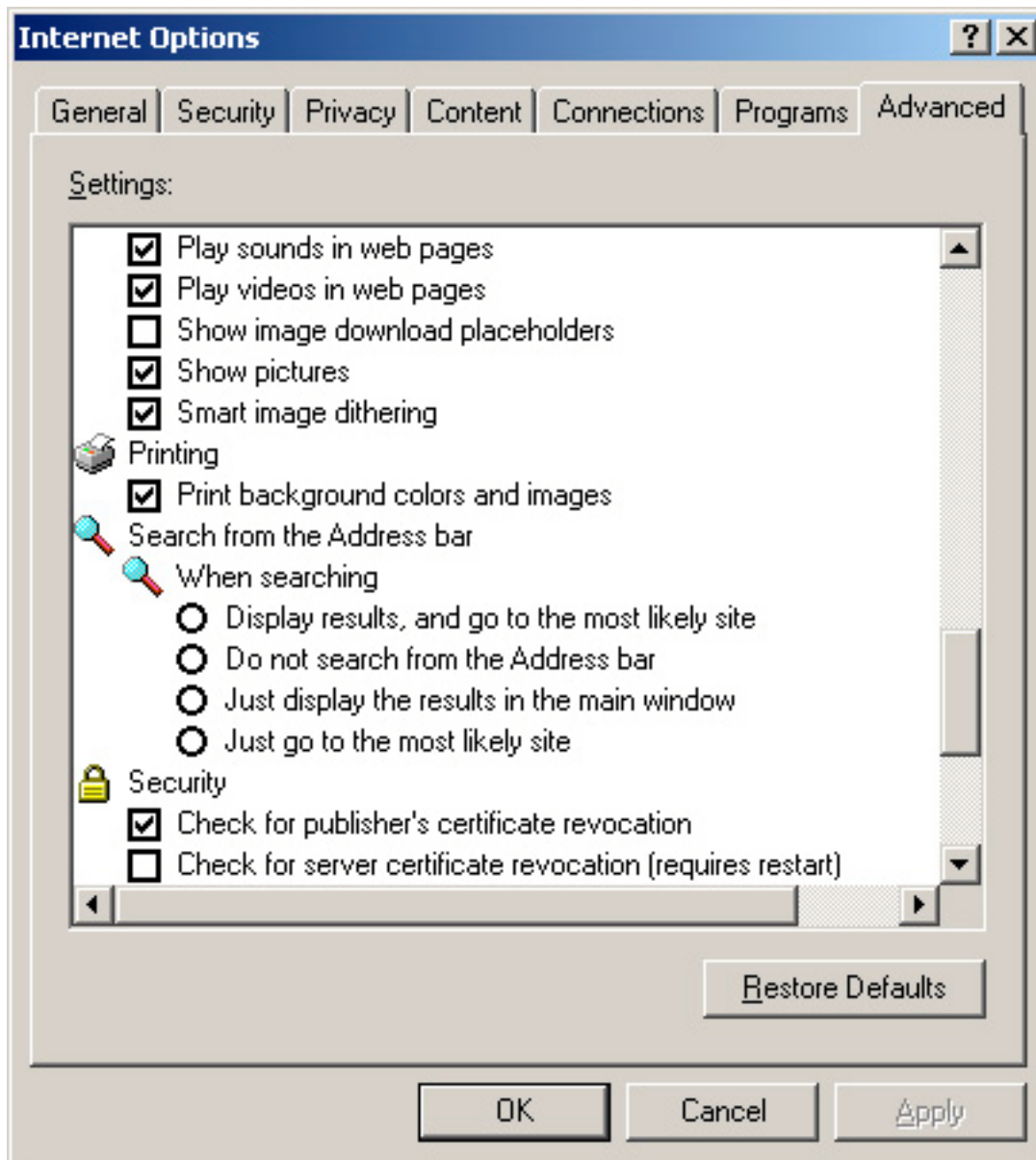
Black Separator Bars

The Heat Sheets put a black bar between rounds to make viewing easier. If you view the Heat Sheets using Internet Explorer, you will see the black bar but it may not print.

If you have this problem:

1. Open Internet Explorer
2. Select the 'Tools' Menu
3. Select 'Internet Options...'
4. Select the Advanced tab
5. Check Printing option 'Print background colors and images'

NOTE: If you do this and use the same machine for printing pages from the Internet, you will print background images and colors which you probably do not want.



Page Headers and Footers

Internet Explorer will print the page address and page number by default. This wastes printed page space and may cause overflow. To configure IE to not print these headers and trailers:

1. Open Internet Explorer
2. Select the Print Menu
3. Select 'Page Setup...'
4. Blank out the Header and Footer
5. You may also change the margins here if desired.

Additional Install Steps

The installation of the program by running the self-extracting zip file will NOT put an entry in the Windows Start Programs Menu. The best way to make it easy to run is to put a shortcut on your desktop to RCPRO_Race.EXE. To put a shortcut on your desktop, Open up Windows Explorer, select RCPRO_Race.EXE with mouse button two and drag it to your desktop. Select 'Shortcut'.

This will put the program icon for RCPRO_Race.EXE on your desktop.



Then select the shortcut icon with mouse button 2 and select Rename. Change the name to something shorter. Now you can start this software by double clicking on the shortcut.

Removal

If you installed in the default directory of RCPRO_Race, you may delete this folder and everything in it. Use caution because you may be deleting race and/or pilot files that contain valuable data.